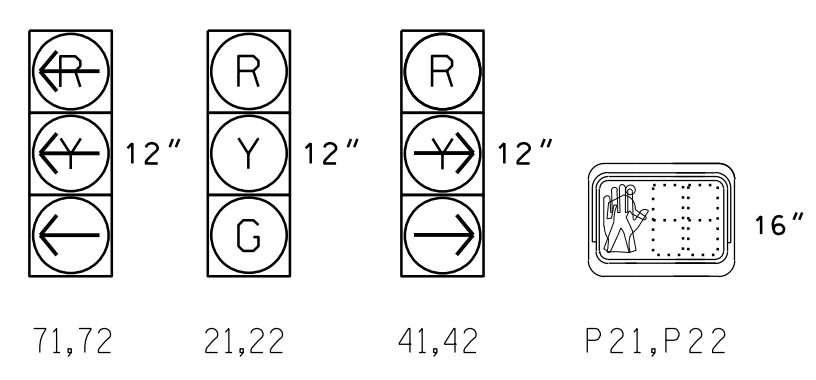


SIGNAL FACE I.D.
All Heads L.E.D.

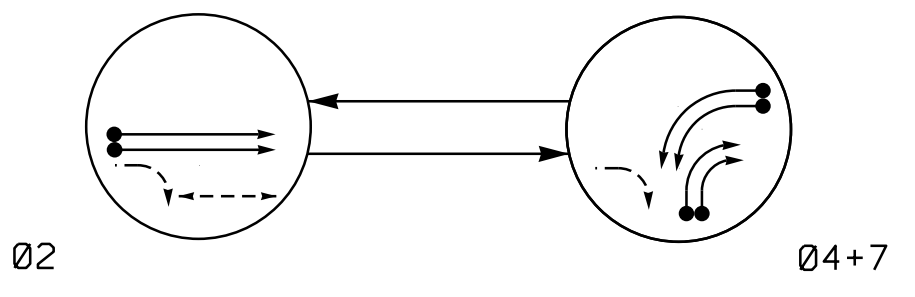


OASIS 2070 LOOP & DETECTOR INSTALLATION CHART												
INDUCTIVE LOOPS						DETECTOR PROGRAMMING						
LOOP	SIZE (FT)	DISTANCE FROM STOPBAR (FT)	TURNS	NEW LOOP	PHASE	CALLING	EXTENSION	FULL TIME DELAY	STRETCH TIME	DELAY TIME	SYSTEM LOOP	NEW CARD
2A	6X6	420	6	Y	2	Y	Y	-	-	-	-	Y
2B	6X6	420	6	Y	2	Y	Y	-	-	-	-	Y
4A	6X40	0	2-4-2	Y	4	Y	Y	-	-	15	-	Y
4B	6X40	0	2-4-2	Y	4	Y	Y	-	-	15	-	Y
7A	6X40	0	2-4-2	Y	7	Y	Y	-	-	-	-	Y
7B	6X40	0	2-4-2	Y	7	Y	Y	-	-	-	-	Y

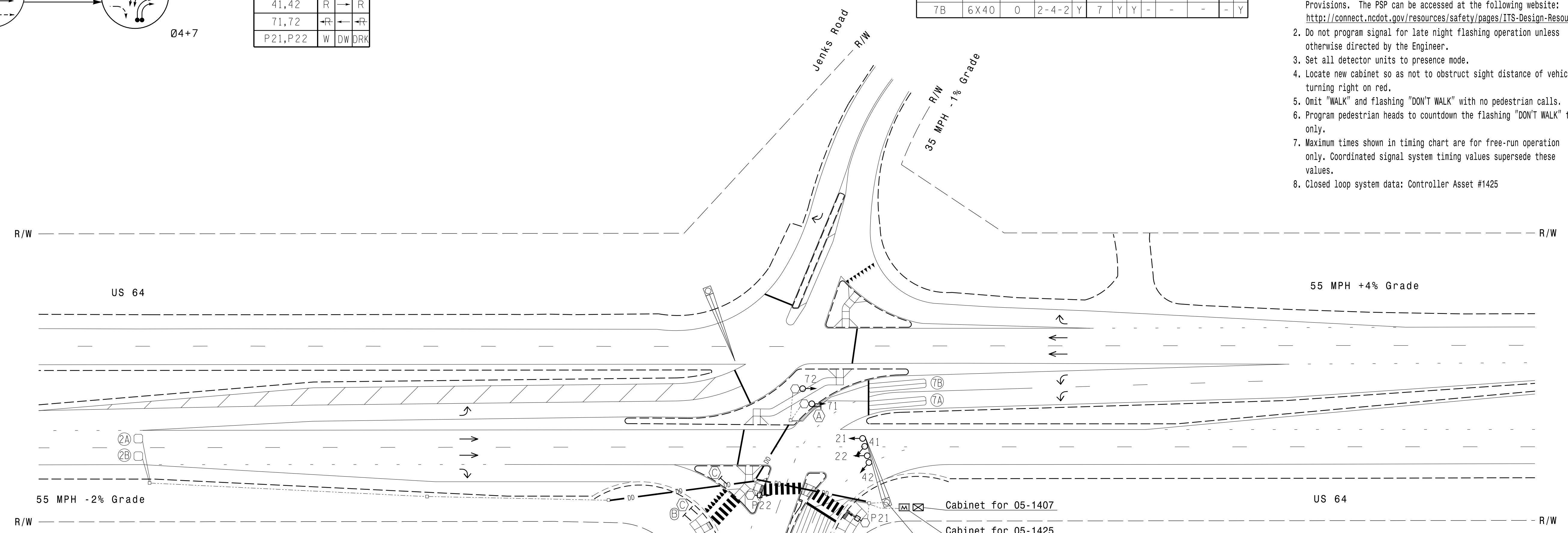
2 Phase Fully Actuated (US 64 & Jenks/Richardson Road Closed Loop System) Signal System: 10534
NOTES

- Refer to "Roadway Standard Drawings NCDOT" dated January 2018, "Standard Specifications for Roads and Structures" dated January 2018, and all applicable sections of the latest version of the generic Project Special Provisions. The PSP can be accessed at the following website: <http://connect.ncdot.gov/resources/safety/pages/ITS-Design-Resources.aspx>
- Do not program signal for late night flashing operation unless otherwise directed by the Engineer.
- Set all detector units to presence mode.
- Locate new cabinet so as not to obstruct sight distance of vehicles turning right on red.
- Omit "WALK" and flashing "DON'T WALK" with no pedestrian calls.
- Program pedestrian heads to countdown the flashing "DON'T WALK" time only.
- Maximum times shown in timing chart are for free-run operation only. Coordinated signal system timing values supersede these values.
- Closed loop system data: Controller Asset #1425

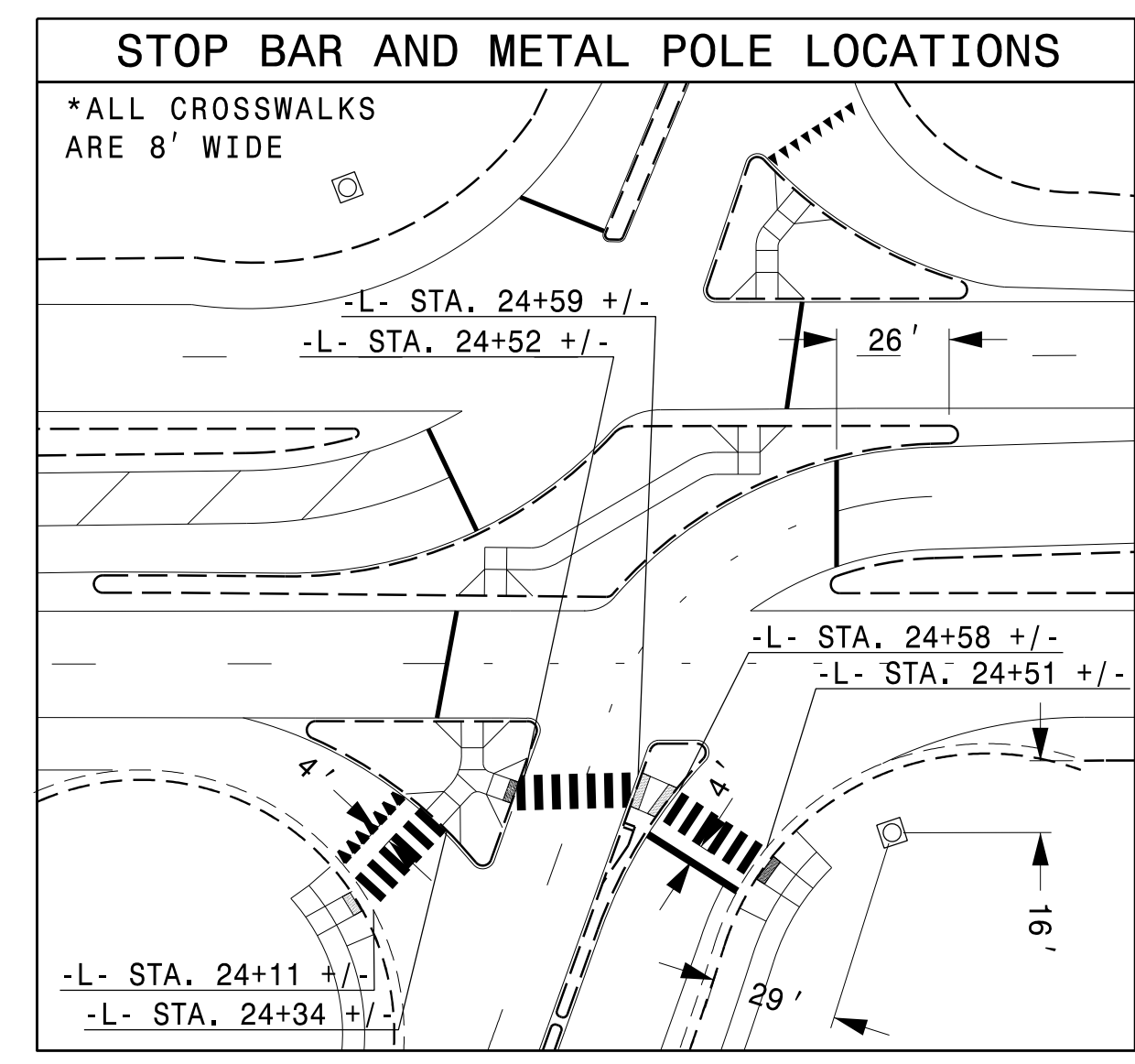
PHASING DIAGRAM



SIGNAL FACE	PHASE		
	02	04+7	04+7
21,22	G	R	Y
41,42	R	-	R
71,72	+R	-	+R
P21,P22	W	DW	DRK



OASIS 2070 TIMING CHART			
FEATURE	PHASE		
	2	4	7
Min Green 1 *	14	7	7
Extension 1 *	6.0	2.0	2.0
Max Green 1 *	90	20	20
Yellow Clearance	5.4	3.0	3.0
Red Clearance	1.4	3.2	3.2
Walk 1 *	7	-	-
Don't Walk 1	12	-	-
Seconds Per Actuation *	1.5	-	-
Max Variable Initial *	46	-	-
Time Before Reduction *	15	-	-
Time To Reduce *	45	-	-
Minimum Gap	3.4	-	-
Recall Mode	MIN RECALL	-	-
Vehicle Call Memory	YELLOW	-	-
Dual Entry	-	ON	ON
Simultaneous Gap	ON	ON	ON



- SIGNS**
- PROPOSED**
- (A) No U-Turn Sign (R3-4)
 - (B) "YIELD" Sign (R1-2)
 - (C) Pedestrian Sign (W11-2) with Diagonal Arrow (W16-7p)
- EXISTING**
- (A) Traffic Signal Head
 - (B) Modified Signal Head
 - (C) Sign

- LEGEND**
- PROPOSED**
- (A) Traffic Signal Head
 - (B) Modified Signal Head
 - (C) Sign
 - (D) Pedestrian Signal Head With Push Button & Sign
 - (E) Signal Pole with Guy
 - (F) Signal Pole with Sidewalk Guy
 - (G) Inductive Loop Detector
 - (H) Controller & Cabinet
 - (I) Master Controller & Cabinet
 - (J) Junction Box
 - (K) 2-in Underground Conduit
 - (L) Right of Way
 - (M) Directional Arrow
 - (N) Type II Signal Pedestal
 - (O) Metal Pole with Mastarm
 - (P) Directional Drill
- EXISTING**
- (A) Traffic Signal Head
 - (B) Modified Signal Head
 - (C) Sign
 - (D) Pedestrian Signal Head With Push Button & Sign
 - (E) Signal Pole with Guy
 - (F) Signal Pole with Sidewalk Guy
 - (G) Inductive Loop Detector
 - (H) Controller & Cabinet
 - (I) Master Controller & Cabinet
 - (J) Junction Box
 - (K) 2-in Underground Conduit
 - (L) Right of Way
 - (M) Directional Arrow
 - (N) Type II Signal Pedestal
 - (O) Metal Pole with Mastarm
 - (P) Directional Drill

NC Dept of Transportation
Division of Highways
Final Drawing Date: 2/16/2021
Checked By: [Signature]
ITS & Signals Unit

THIS PLAN SUPERSEDES THE PLAN SIGNED AND SEALED ON 10-29-2020.

New Installation

Prepared For: **US 64 EB at Richardson Road**

Division 5 Wake County Apex

PLAN DATE: February 2021 REVIEWED BY: WJ Hamilton

PREPARED BY: ZM Esposito RKA PROJ. NO: 19331 (040)

750 N. Greenfield Pkwy, Garner, NC 27529

SCALE: 1" = 40'

REVISIONS: [Table]

DATE: 2/9/2021

SIGNATURE: [Signature]

DATE: 2/9/2021

SIG. INVENTORY NO. 05-1425

DOCUMENT NOT CONSIDERED FINAL UNLESS ALL SIGNATURES COMPLETED

SEAL: NORTH CAROLINA PROFESSIONAL ENGINEER SEAL 32396



8210 University Executive Park Drive Suite 220 Charlotte, North Carolina 28262
Phone: 704-549-4200 | www.ramkemp.com | NC License No. C-0910