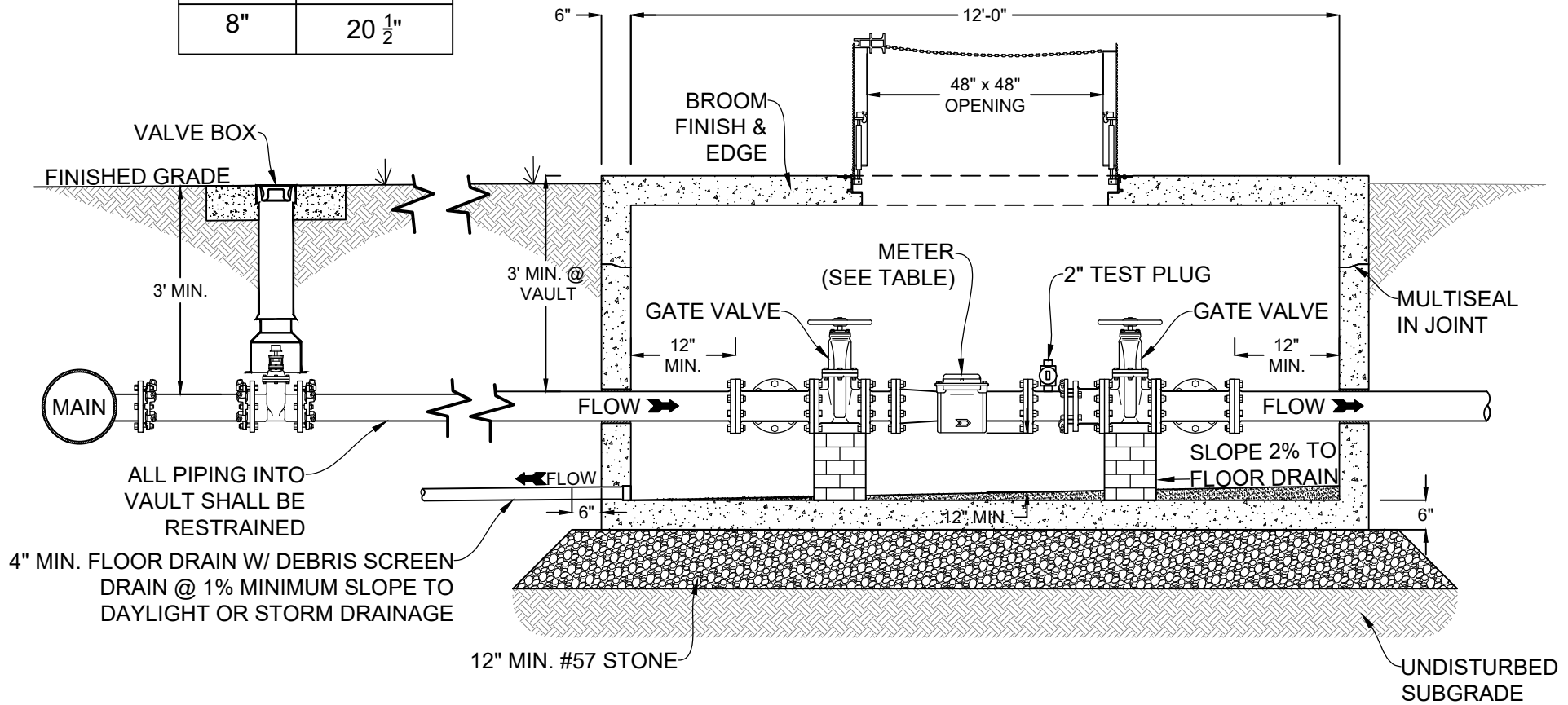


METER	OPENING
3"	12 1/2"
4"	14 1/2"
6"	18 1/2"
8"	20 1/2"

- NOTES:
1. INSTALLATIONS LARGER THAN 3" SHALL REQUIRE A SPECIAL DETAIL AND PRIOR APPROVAL FROM THE WATER RESOURCES DIRECTOR.
 2. ALL PIPE SHALL BE DUCTILE IRON. A BYPASS LINE MUST BE INCLUDED.
 3. THERE SHALL BE A MINIMUM 5 FOOT EASEMENT AROUND ALL SIDES OF THE METER VAULT.



SECTION VIEW