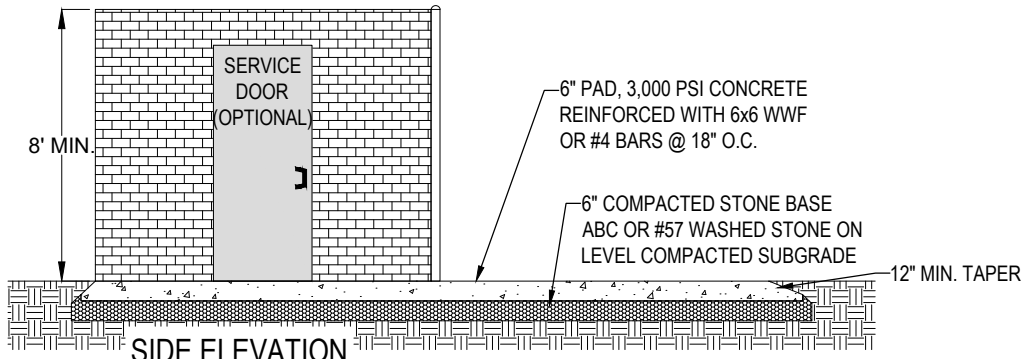
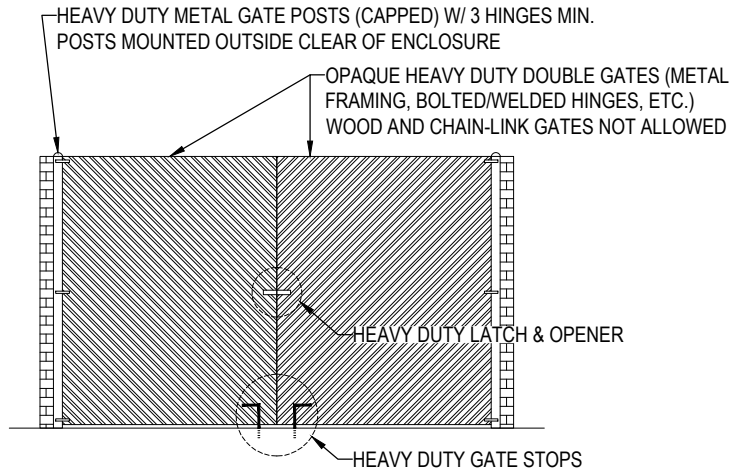


LAYOUT

↑ NO OBSTRUCTION SHALL BE PERMITTED WITHIN 23' ABOVE DUMPSTER PAD OR ENTRANCE



SIDE ELEVATION



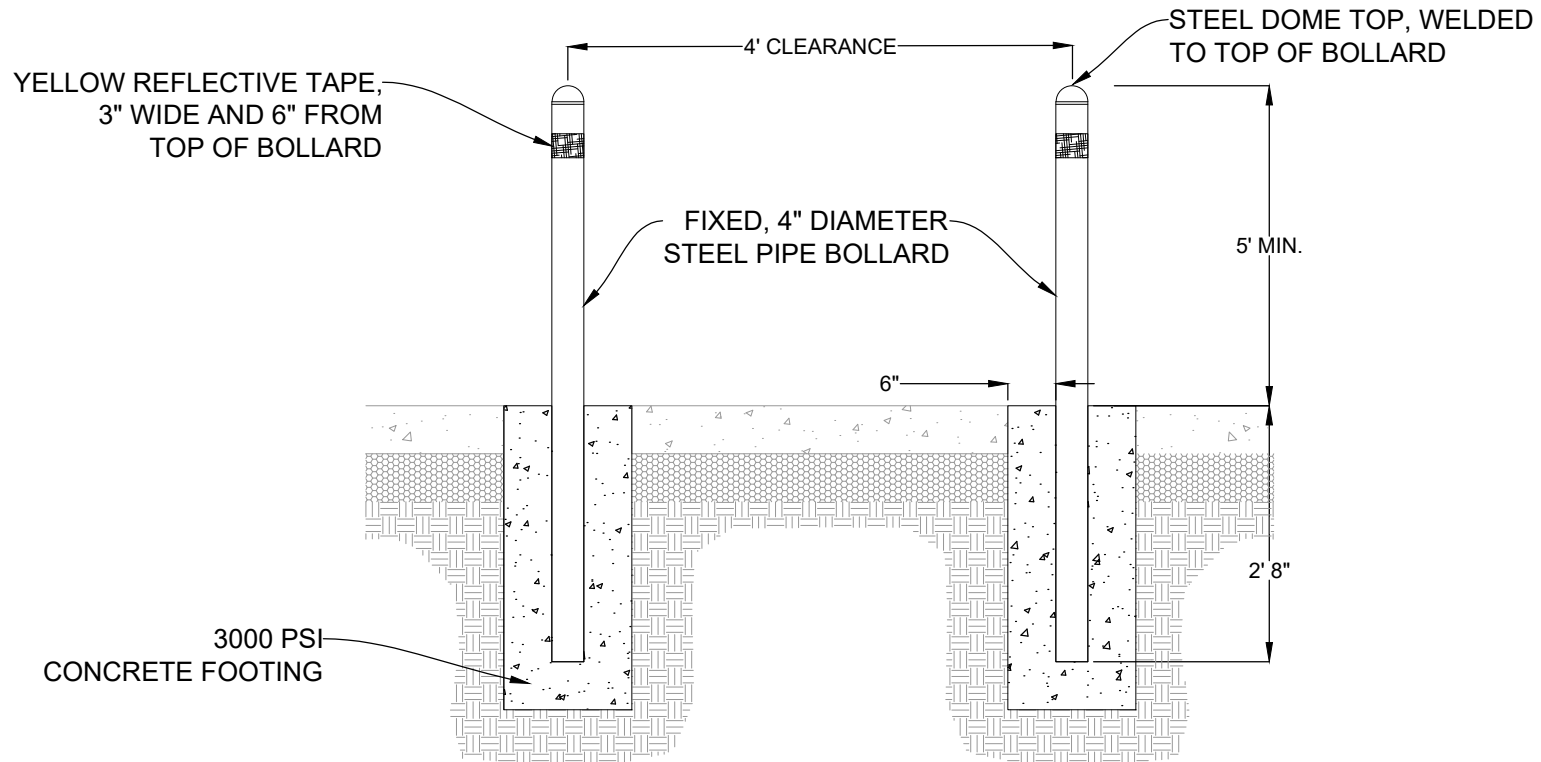
FRONT ELEVATION

**GENERAL NOTES:**

1. LAYOUT IS FOR A SINGLE DUMPSTER; ENCLOSURE NEEDS TO EXPAND 12 FEET FOR EACH ADDITIONAL DUMPSTER. COMPACTORS, RECYCLING AND TRASH ROLLOUT CART AREAS MUST BE SCREENED IN A SIMILAR WAY.
2. INCLUDE ENCLOSURE DESIGN/LOCATION WITH ANY PLAN SUBMITTAL.
3. ENCLOSURE MUST BE 8 FEET HIGH OR HEIGHT OF THE DUMPSTER (WHICHEVER IS HIGHER).
4. ENCLOSURE WALLS MUST BE BUILT OF MASONRY MATERIALS AND FINISHED TO MATCH ARCHITECTURALLY WITH PRINCIPAL BUILDING.
5. PAD MUST BE PROPERLY SLOPED AND/OR INCORPORATE OTHER APPROPRIATE DRAINAGE TO AVOID HOLDING WATER.
6. GATES MUST BE BUILT OF HEAVY DUTY COMMERCIAL GRADE MATERIALS (METAL FRAMING/FINISHES, BOLTED/WELDED HINGES, ETC.).
7. GATE FINISHES MUST BLEND WITH PRINCIPAL BUILDING BY USING OPAQUE METAL, WOOD COMPOSITE, PVC COMPOSITE, OR APPROVED EQUALS (NO WOOD FRAMING, WOOD FINISHES OR CHAIN-LINK FENCING OR SIMILAR MATERIALS ALLOWED).
8. GATES MUST BE DESIGNED TO SWING CLEAR OF ENCLOSURE WALLS.
9. OTHER COMPONENTS AND HARDWARE (BOLLARDS, HINGES, LATCHES, STOPS, SERVICE DOORS, ETC.) MUST BE BUILT OF HEAVY DUTY COMMERCIAL GRADE MATERIALS.
10. ENCLOSURES MUST BE LANDSCAPED TO BLEND WITH SURROUNDING AREAS AND BUILDINGS AND VISUALLY SOFTEN THE APPEARANCE.
11. GATES MUST REMAIN CLOSED EXCEPT DURING TRASH PICKUPS; OPTIONAL SERVICE DOORS ARE RECOMMENDED.
12. GATE STOP LATCHES & HOLES ARE REQUIRED TO HOLD GATES IN PLACE WHETHER CLOSED OR OPEN.

# BOLLARD DETAIL

NO SCALE



FRONT VIEW

**NOTE:**

ALL METAL SHALL BE GALVANIZED PAINT, ONE COAT METAL PRIMER AND TWO COATS BLACK METAL ENAMEL OR VINYL COATING/COVERING.

TOWN OF APEX  
STANDARDS

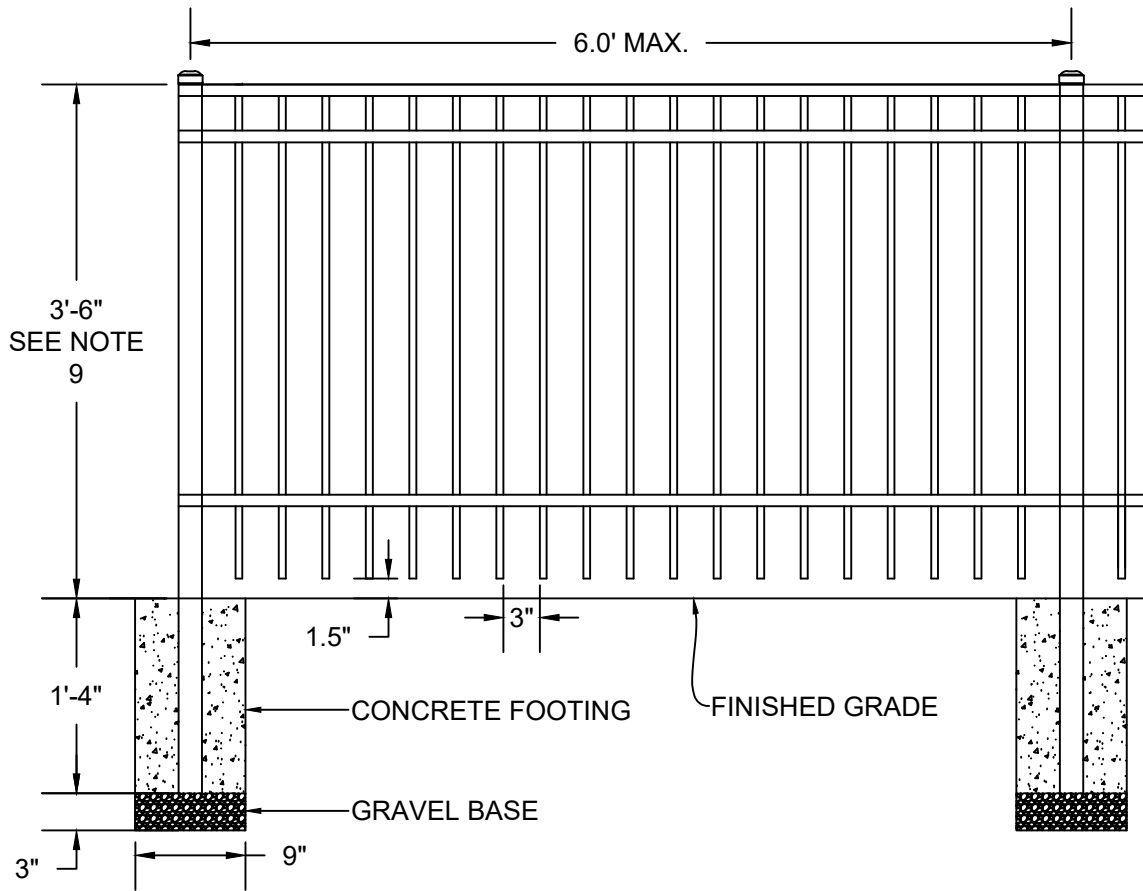
EFFECTIVE: FEBRUARY 28, 2023

DUMPSTER PAD & ENCLOSURE

STD. NO.

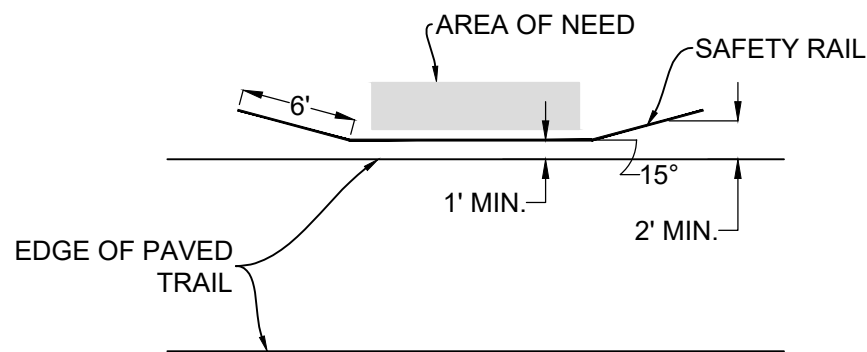
200.02

SHEET 2 OF 2



**NOTES:**

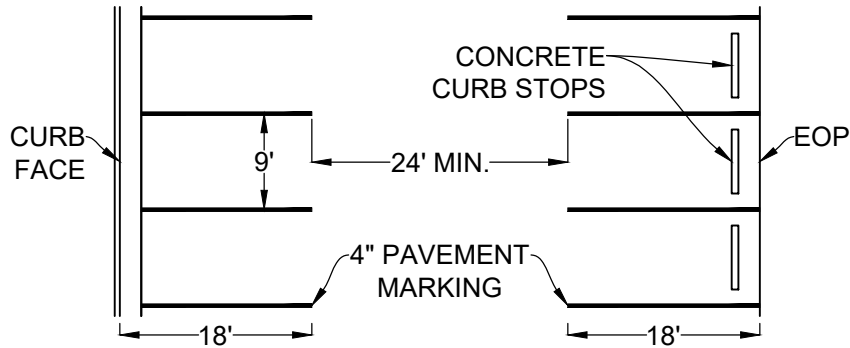
1. POSTS SHALL BE MINIMUM 2" SQUARE x 0.060" WALL ALUMINUM WITH INTERIOR REINFORCING WEB.
2. PICKETS SHALL BE MINIMUM 0.75" SQUARE x 0.045" WALL ALUMINUM.
3. RAILS SHALL BE MINIMUM 1" SQUARE x 0.060" WALL ALUMINUM.
4. ALUMINUM SHALL CONFORM TO ASTM B221. ALUMINUM EXTRUSIONS FOR POSTS AND RAILS SHALL BE ALLOY AND TEMPER DESIGNATION 6005-T52. ALUMINUM EXTRUSIONS FOR PICKETS SHALL BE ALLOY AND TEMPER DESIGNATION 6063-T52.
5. ALL ALUMINUM SHALL HAVE ELECTROSTATICALLY APPLIED TGIC POLYESTER POWDER COAT FINISH, BLACK COLOR, 2 MILS MINIMUM THICKNESS.
6. ALL CONCRETE SHALL BE 3600 P.S.I. COMPRESSIVE STRENGTH.
7. A PEDESTRIAN HAND RAIL MAY BE INSTALLED AT A HEIGHT OF 34 INCHES, OR A BICYCLE RUB RAIL AT A HEIGHT OF 36 INCHES ON THE SAFETY RAIL.
8. ON BRIDGES AND RETAINING WALLS ANCHOR BOLTS THAT MEET MANUFACTURER SPECIFICATIONS SHALL BE USED TO SECURE SAFETY RAIL.
9. ON BRIDGES A 4-FOOT TALL SAFETY RAIL MAY BE REQUIRED TO PREVENT CYCLISTS FROM FALLING OVER.
10. PROVIDE 2-FOOT LATERAL CLEARANCE FROM PAVED TRAIL. WHERE LESSER CLEARANCE IS NEEDED, PROVIDE FLARED END TREATMENTS.
11. WHERE HAND RAIL IS RETROFITTED, INSTALL SAFETY RAIL 1 FOOT FROM EDGE OF PAVED TRAIL WITH FLARED END TREATMENTS BEYOND THE AREA OF NEED.



METHOD OF FLARING END TREATMENTS (NOTES 10 AND 11)

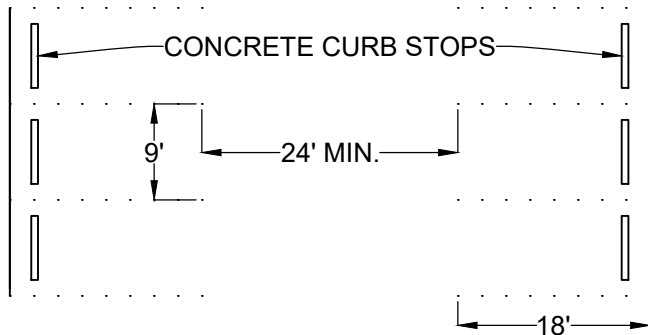
<p><b>TOWN OF APEX STANDARDS</b></p>	<p><b>SAFETY RAIL</b></p>	<p>STD. NO. <b>200.03</b></p>
<p>EFFECTIVE: JANUARY 12, 2021</p>		<p>SHEET 1 OF 1</p>

**PAVED PARKING, 90°**



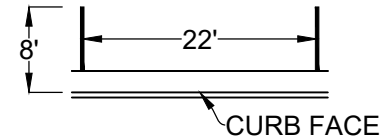
**PAVEMENT LOT STRUCTURE**  
 2" ASPHALT SURFACE COARSE  
 6" AGGREGATE BASE COARSE  
 COMPACTED SUBGRADE

**GRAVEL PARKING**



**GRAVEL LOT STRUCTURE**  
 1.5" #78M STONE  
 6" AGGREGATE BASE COARSE  
 COMPACTED SUBGRADE

**PAVED PARKING, PARALLEL**



**NOTES FOR PAVED PARKING LOTS:**

1. CONCRETE STOP NOT REQUIRED IF CURB IS USED. IF SIDEWALK IS AGAINST BACK OF CURB, A MINIMUM 6' WIDTH IS REQUIRED WITHOUT CURB STOPS.
2. AN ELECTRIC PLAN MUST BE SUBMITTED TO THE PLANNING AND ELECTRIC DEPARTMENTS FOR APPROVAL.
3. A PLANTING PLAN MUST BE SUBMITTED TO THE PLANNING DEPARTMENT FOR APPROVAL.
4. NUMBER OF REQUIRED ADA SPACES FOR PAVED PARKING AREAS ARE LISTED IN THE CURRENT NC BUILDING CODE.
5. ALL ADA PARKING SPACES MUST DIRECTLY CONNECT TO PUBLIC ACCESS ROUTES THAT MEET ADA REQUIREMENTS.
6. ADA PARKING SPACES MUST MEET ADA DIMENSIONS.

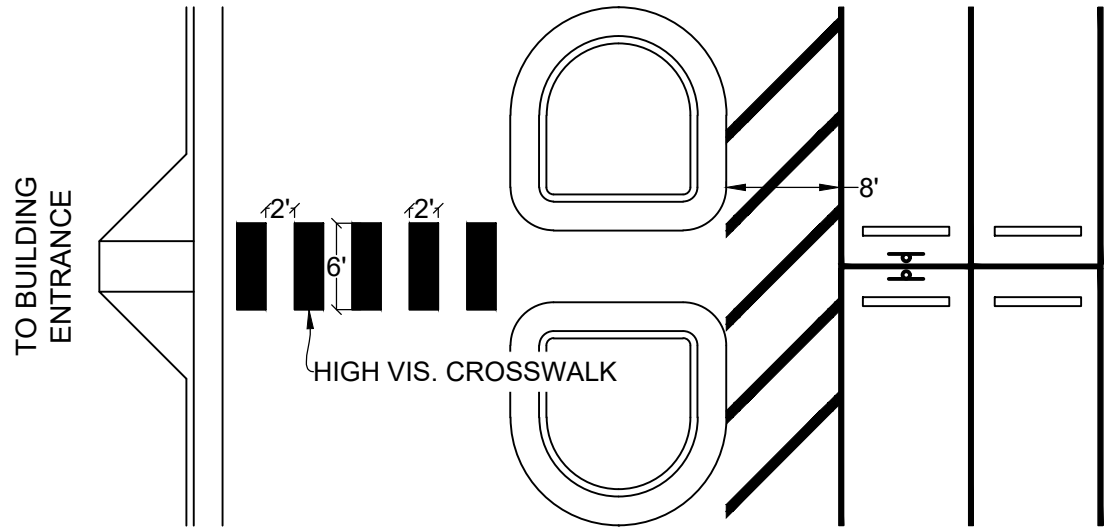
**NOTES FOR GRAVEL PARKING LOTS:**

1. DRIVE AISLES MUST BE REPAIRED OR REPLACED WITH #78M STONE EVERY SIX (6) MONTHS.
2. AN ELECTRIC PLAN MUST BE SUBMITTED TO THE PLANNING AND ELECTRIC DEPARTMENTS FOR APPROVAL.
3. A PLANTING PLAN MUST BE SUBMITTED TO THE PLANNING DEPARTMENT FOR APPROVAL.

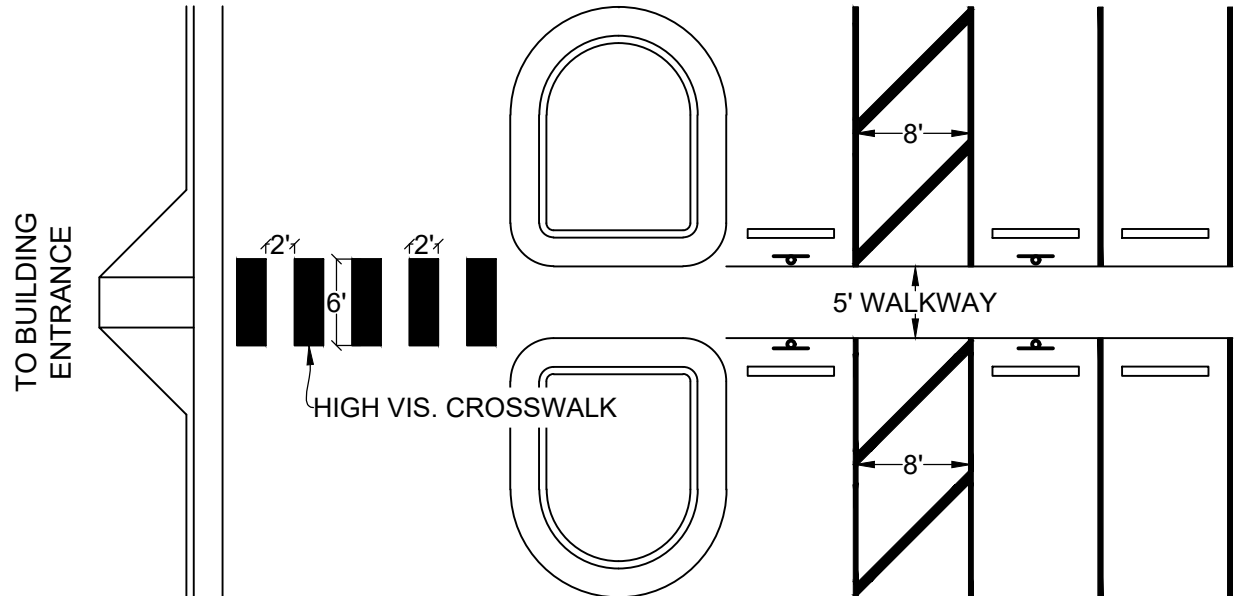
# ACCESSIBLE PARKING SPACES


NOTE: ACCESSIBLE PARKING SPACES TO BE CONSTRUCTED PER THE NC ACCESSIBILITY CODE

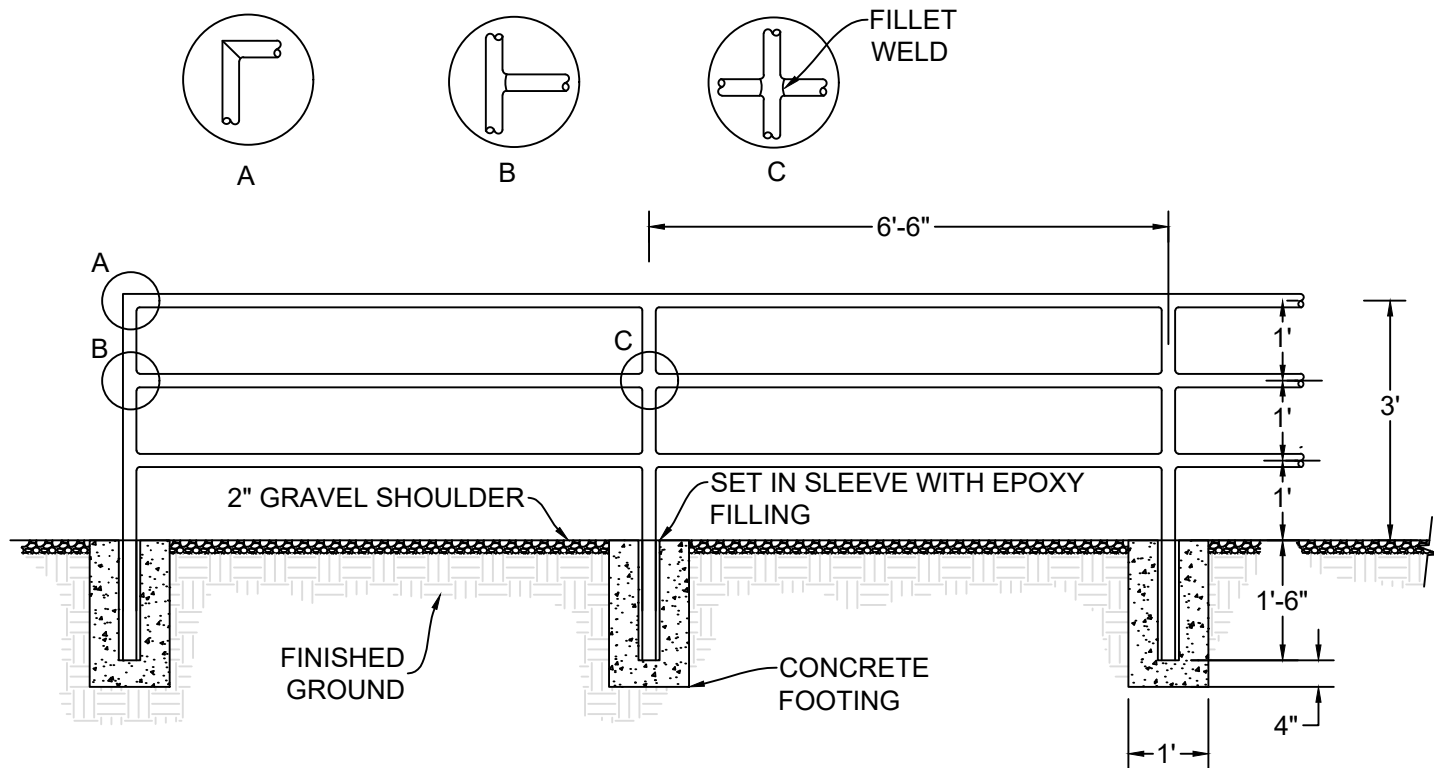
## OPTION 1



## OPTION 2



SYMBOL	DESCRIPTION
	R7-8 RESERVED PARKING SIGN



**NOTES:**

1. METAL HAND RAIL SHALL BE INSTALLED 1 FOOT FROM THE EDGE OF PAVED TRAIL ON CENTER.
2. PROVIDE FLARED END RAIL TREATMENTS AT 15 DEGREES AWAY FROM THE TRAIL BEYOND THE AREA OF NEED. FLARED END TREATMENTS SHALL EXTEND TWO FEET MINIMUM FROM THE EDGE OF TRAIL.
3. THE TOP RAIL SHALL BE INSTALLED AT A HEIGHT OF 3 FEET FROM THE FINISHED GROUND.
4. ALL CONCRETE FOOTINGS FOR HAND RAIL SHALL MEET 3,600 PSI COMPRESSIVE STRENGTH.
5. ALL HAND RAIL METAL JOINTS SHALL HAVE A ½ INCH WIDE FILLET WELD.
6. PRIME AND PAINT METAL HAND RAIL WITH BLACK ALL WEATHER ENAMEL PAINT AFTER INSTALLATION.

**TOWN OF APEX  
STANDARDS**

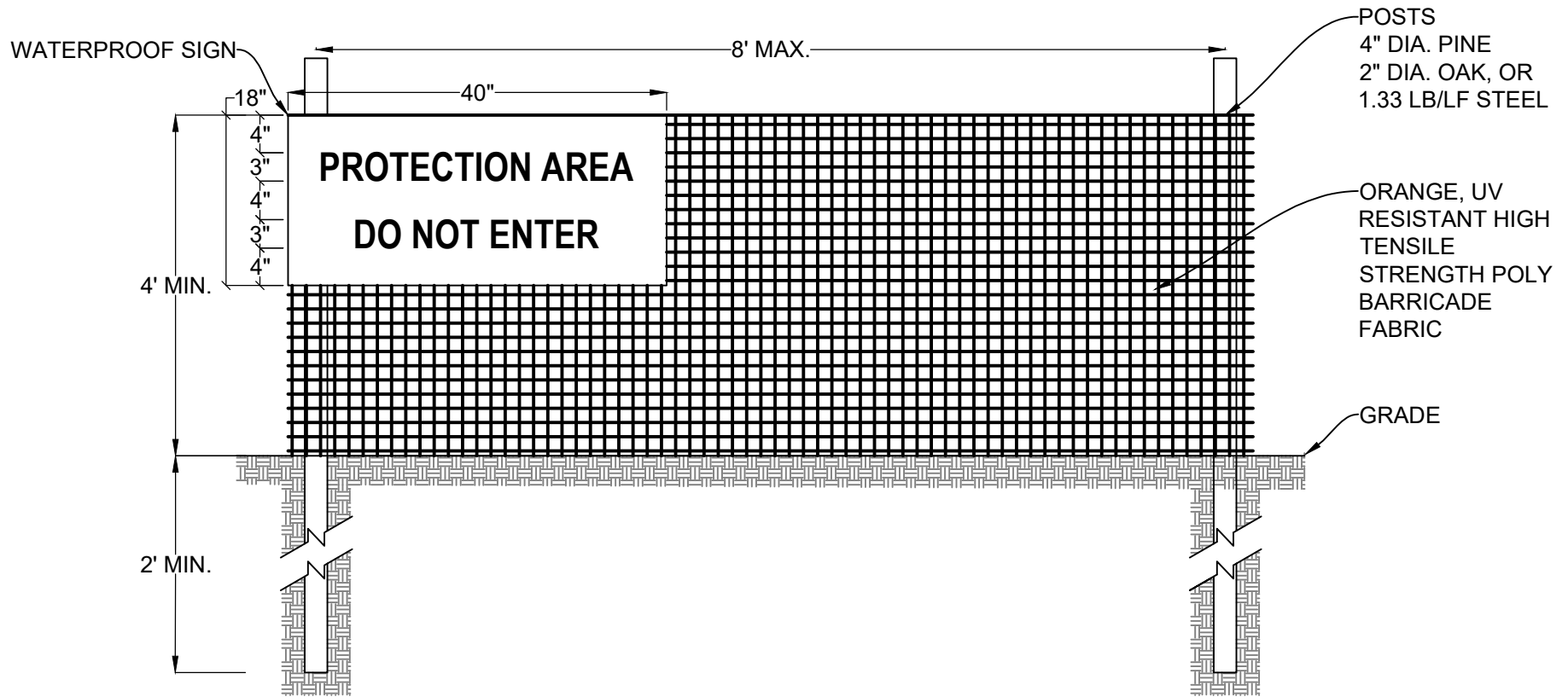
EFFECTIVE: JANUARY 12, 2021

**HANDRAIL**

STD. NO.

**200.05**

SHEET 1 OF 1



**NOTES**

1. WARNING SIGNS TO BE MADE OF DURABLE WATERPROOF MATERIAL.
2. ALL LETTERS TO BE AT LEAST 3-INCHES HIGH, CLEARLY LEGIBLE AND SPACED AS INDICATED ABOVE.
3. SIGNS TO BE PLACED 200-FEET ON CENTER, MAX.
4. SIGNS TO BE PLACED AT EACH END OF LINEAR TREE PROTECTION AREA AND 200-FEET ON CENTER THEREAFTER.
5. FOR TREE PROTECTION AREAS LESS THAN 200-FEET IN PERIMETER, PROVIDE NO LESS THAN ONE SIGN PER PROTECTION AREA AND/OR SIDE.
6. ATTACH SIGNS SECURELY TO FENCE POSTS AND FABRIC.
7. FABRIC MUST BE ATTACHED TO APPROVED POSTS ONLY. DO NOT ATTACH TO TREES.
8. MAINTAIN TREE PROTECTION FENCE THROUGHOUT DURATION OF PROJECT - FENCING MUST REMAIN UPRIGHT AND SLACK FREE.
9. ADDITIONAL SIGNS AND/OR PROTECTION MEASURES MAY BE REQUIRED BY THE PLANNING DEPARTMENT BASED UPON ACTUAL FIELD CONDITIONS.
10. FAILING TO MAINTAIN TREE PROTECTION MEASURES MAY RESULT IN FINES AND/OR PERMIT REVOCATION.